

## Specifications

Dimensions	
Maximum Arm height (on rail)	≈ 9.5 m
Maximum Superstructure height (on rail)	≈ 3.7 m
Maximum Superstructure height (on road)	≈ 3.5 m
Horizontal reach	7.5 m
Maximum rated capacity	20,000kg
Overall height, stowed (road)	≈ 3.5 m
Overall width, stowed	2.7 m
Overall length, stowed	≈ 9 m
Rail Wheelbase	4565 m

Approach angle (road)	22°
Departure angle (road)	26°

Turning radius (road)	≈ 6m
Minimum Track Curve Radius	60 m
Ground clearance (rail)	≈ 175mm
Ground clearance (road)	300mm
Tail swing	1485mm
Tail swing with Aux Counterweight	1785mm

Power supply	
Power Source	24 volt D.C.
Batteries	2 x 12v
Controls	Proportional
24 Volt DC outlet at dipper	Standard
Maximum hydraulic pressure	400 bar
Hydraulic tank	160 litres
Fuel tank	203 litres

Environmental data and limits	
Sound power level (machine engine)	LWA 101 dB
Sound pressure level in Cab (A-weighted) (windows doors open)	LPA 75 dB
Whole body Vibration	0.25 m/s <sup>2</sup>
Hand-Arm Vibration	<2.5 m/s <sup>2</sup>
Engine Exhaust Emissions	Tier 4(f) / Stage 5 dependent on variant
Operating temperature	-5 °C to +30 °C
Maximum Gradient (rail)	1 in 25
Maximum rail Cant (travelling)	200mm
Maximum rail Cant (working)	200mm
Maximum slope rating, lifting, on tracks	3.0°
Maximum side slope rating, lifting, on tracks	3.0°
Maximum gradeability rating, on tracks – dig mode	35.0°
Maximum gradeability rating, on tracks with aux counterweight fitted – travel mode	20.0°

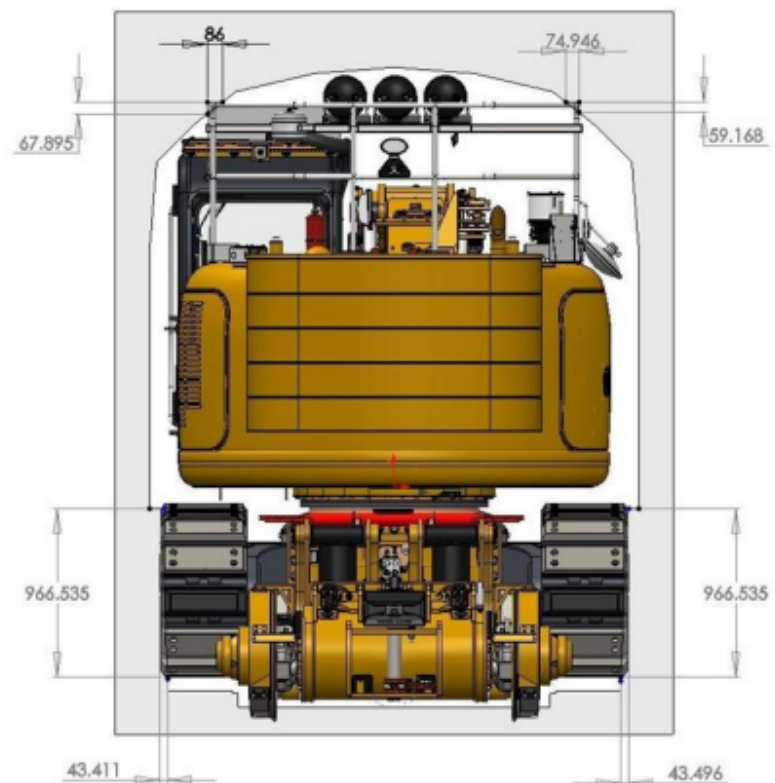
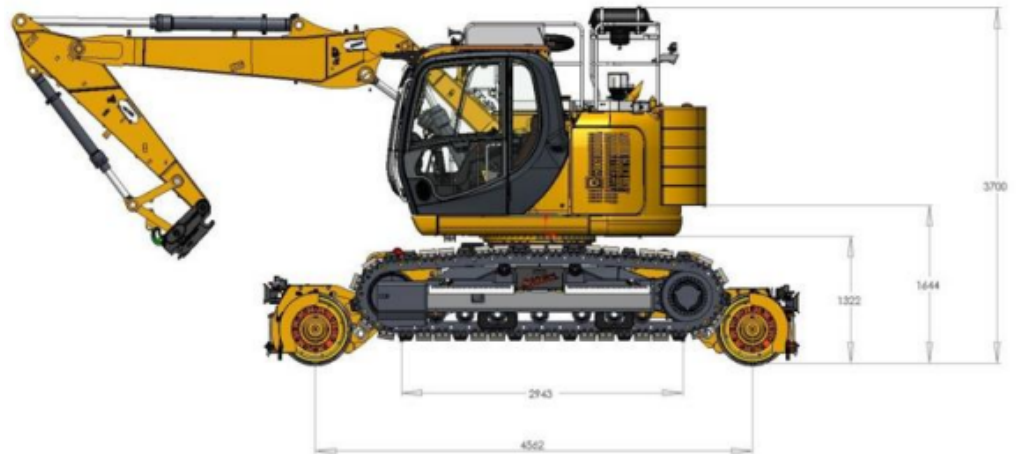
Weights	
Overall weight	31 t
Gross Weight with Aux Counterweight Fitted	Option
Max Rail Wheel loading in working mode	≈ 23 tonnes
Max Towing Capacity (rail)	69,000 kg (69 tonnes at either one end of the machine or divided between both ends)

The machine rail wheel loadings are with the maximums for use on light rail systems

Maximum Bucket Capacity Guide	
Dig Mode – Road mode Loose Ballast	1.7m <sup>3</sup>
Dig Mode – Road mode Other	0.9m <sup>3</sup>
Dig Mode – Rail mode No Aux Counterweight	0.5m <sup>3</sup>
Dig Mode – Rail mode 1.5t Aux Counterweight	0.7m <sup>3</sup>
Dig Mode – Rail mode 3t Aux Counterweight	0.9m <sup>3</sup>

The machine is not suitable for operation of spring loaded points

# RA310 HD LSR Tracked Excavator Crane RRV



Maximum Travelling Speed	15 mph	Maximum On/Off Track Gradient	01:25
Maximum Working Speed	10 mph	Maximum On/Off Track Cant	150mm
Maximum Travelling Speed Through Switches and Crossings	5 mph	May Be Used Under LIVE Overhead Lines	NO
Maximum Travelling Speed Through Raised Checkrails	5 mph	May Be Used On LIVE 3 Or 4 Rail Lines	NO
Maximum Working Cant	200mm	May Be Used On ISOLATED 3 Or 4 Rail Lines	YES
Maximum Travelling Cant	200mm	May Be Used Adjacent To Running Line	YES @ >2.4 meters
Maximum Working Gradient	01:25	Minimum 1300mm Height Clearance On Out Of Gauge Tail Swing	YES
Minimum Track Radius	80M	GROSS MACHINE IF FITTED	31t
Maximum Air or Hydraulic Non-Service Braked Towed Load	RECOVERY ONLY – 31t	AUX COUNTERWEIGHT IF FITTED	+*. *t
Maximum AIR Service Braked Towed Load Equipped with RCI Tandem Lifting Mode	69t YES	THIS MACHINE MUST NOT TRAVEL OUTSIDE OF A POSSESSION – Refer to Engineering Acceptance Certificate for specific limitations	

## Specifications

Dimensions	
Maximum Arm height (on rail)	≈ 9.5 m
Maximum Superstructure height (on rail)	≈ 3.7 m
Maximum Superstructure height (on road)	≈ 3.5 m
Horizontal reach	7.5 m
Maximum rated capacity	20,000kg
Overall height, stowed (road)	≈ 3.5 m
Overall width, stowed	2.7 m
Overall length, stowed	≈ 9 m
Rail Wheelbase	4565 m

Approach angle (road)	22°
Departure angle (road)	26°

Turning radius (road)	≈ 6m
Minimum Track Curve Radius	60 m
Ground clearance (rail)	≈ 175mm
Ground clearance (road)	300mm
Tail swing	1485mm
Tail swing with Aux Counterweight	1785mm

### Power supply

Power Source	24 volt D.C.
Batteries	2 x 12v
Controls	Proportional
24 Volt DC outlet at dipper	Standard
Maximum hydraulic pressure	400 bar
Hydraulic tank	160 litres
Fuel tank	203 litres

### Environmental data and limits

Sound power level (machine engine)	L <sub>WA</sub> 101 dB
Sound pressure level in Cab (A-weighted) (windows doors open)	L <sub>PA</sub> 75 dB
Whole body Vibration	0.25 m/s <sup>2</sup>
Hand-Arm Vibration	<2.5 m/s <sup>2</sup>
Engine Exhaust Emissions	Tier 4(f) / Stage 5 dependent on variant
Operating temperature	-5 °C to +30 °C
Maximum Gradient (rail)	1 in 25
Maximum rail Cant (travelling)	200mm
Maximum rail Cant (working)	200mm
Maximum slope rating, lifting, on tracks	3.0°
Maximum side slope rating, lifting, on tracks	3.0°
Maximum gradeability rating, on tracks – dig mode	35.0°
Maximum gradeability rating, on tracks with aux counterweight fitted – travel mode	20.0°

### Weights

Overall weight	31 t
Gross Weight with Aux Counterweight Fitted	Option
Max Rail Wheel loading in working mode	≈ 23 tonnes
Max Towing Capacity (rail)	69,000 kg (69 tonnes at either one end of the machine or divided between both ends)

The machine rail wheel loadings are with the maximums for use on light rail systems

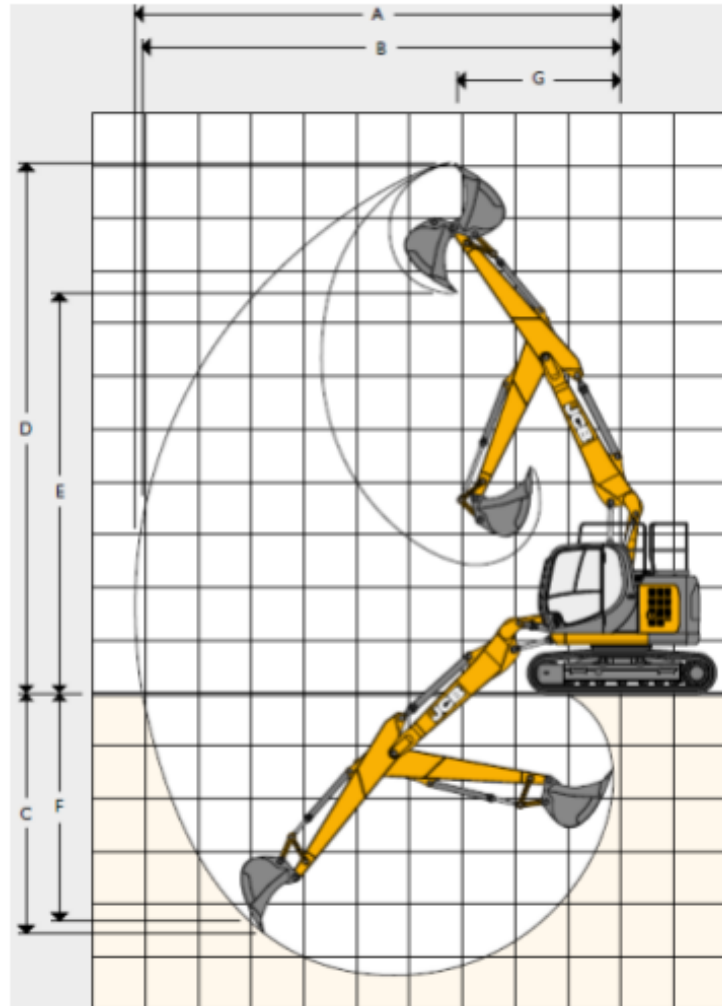
### Maximum Bucket Capacity Guide

Dig Mode – Road mode Loose Ballast	1.7m <sup>3</sup>
Dig Mode – Road mode Other	0.9m <sup>3</sup>
Dig Mode – Rail mode No Aux Counterweight	0.5m <sup>3</sup>
Dig Mode – Rail mode 1.5t Aux Counterweight	0.7m <sup>3</sup>
Dig Mode – Rail mode 3t Aux Counterweight	0.9m <sup>3</sup>

The machine is not suitable for operation of spring loaded points

# RA310 HD LSR Tracked Excavator Crane RRV

43.411



### WORKING RANGE - HD T.A.B. 5.0M

	Dipper length:		2.1 m
A	Maximum digging reach	mm	8356
B	Maximum digging reach (on ground)	mm	8212
C	Maximum digging depth	mm	4369
D	Maximum digging height	mm	9465
E	Maximum dumping height	mm	6997
F	Maximum vertical wall cut depth	mm	3449
G	Minimum swing radius	mm	2576
	Bucket rotation	deg	182
	Maximum dipper tearout	kNm	74.7
	Maximum bucket tearout	kNm	92